

Model 501

Well Casing Depth Indicator

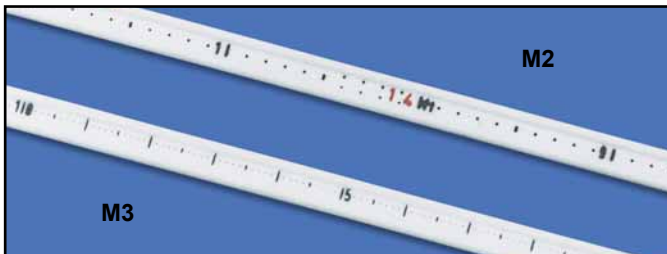
Simple, reliable and easy to operate, the Well Casing Depth Indicator uses a magnetic pendulum assembly, making it ideal for measuring the depth at which steel well casing ends. This is useful when hydrofracturing, for measuring the total depth of a well or for confirming well construction. The pendulum assembly completes a circuit that activates a buzzer and light when it detects steel.

Measurement Options

The 501 probe is mounted on Solinst flat tape with permanent heat embossed markings. The flexible polyethylene flat tape is constructed using stranded stainless steel conductors. These provide extra strength to support the heavy probe. The dog-bone design of the tape avoids adherence to wet surfaces and also provides protection from stretching. Embossed markings are available in:

M2: feet and tenths, marked every 1/100 ft

M3: meters and centimeters, marked every millimeter.



Carrying Bag

An optional carrying bag with a shoulder strap is available to fit the Solinst Reels. The sturdy padded nylon bags have a vent in the base to allow moisture to dissipate. They provide protection during transport as well as handling convenience.

Length Options

The tape is fitted onto Solinst storage and winding reels. Lengths are available as follows:

Small Reel	Medium Reel	Large Reel
50 ft or 15m	500ft or 150m	1250ft or 300m
100ft or 30m	650ft or 200m	1500ft or 450m
150ft or 50m	750ft or 250m	
200ft or 60m	1000ft or 300m	
250ft or 80m		
300ft or 100m		
400ft or 125m		



Operating Principles

The Well Casing Depth Indicator has a unique but simple pendulum assembly. The pendulum is housed in a stainless steel probe that is 6”(152.4 mm) in length and 1.5”(38 mm) in diameter. The probe is attached to marked tape and mounted on a well-balanced reel.

A 9V battery, located in the convenient battery tray, operates a light and buzzer as the probe is lowered down a steel cased well. When the probe is no longer adjacent to steel casing the signal stops. The depth can then be read from the tape at the top of the well.

A tape guide is provided which fits over the top of the well casing to protect the tape from damage and to provide an accurate measurement point.

Applications

- Hydrofracturing
- Installation of telescoping well screen
- Measuring total well depth
- Decommissioning abandoned wells
- Confirming well construction (new and old wells)