



Instruction Sheet

POCKET-SITU™ GETTING STARTED



SET UP THE COMPAQ POCKET PC

You will need—

- Compaq Aero or iPAQ with power accessories and Microsoft® ActiveSync™ CD
- CompactFlash card (CF card) programmed with Pocket-Situ
- For iPAQ: CompactFlash Expansion Pack

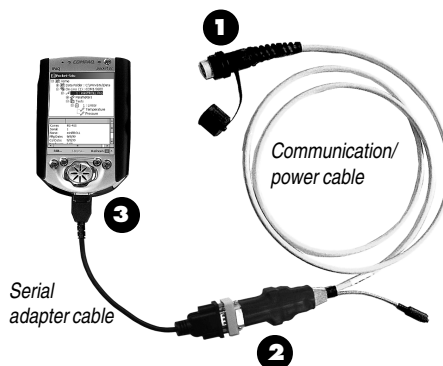
1. Charge the Pocket PC battery.
2. Remove the CompactFlash slot cover and insert the CF card into the slot, pinhole edge first, printed label toward the screen. Press firmly to dock.
3. To transfer extracted data files from the Pocket PC to a desktop PC you will need to install ActiveSync on the desktop computer.

CONNECT TO THE IN-SITU INSTRUMENT

You will need—

- In-Situ instrument with submersible cable attached, or HERMIT 3000
- In-Situ communication/power cable (miniTROLL cable shown) or HERMIT 3000 comm cable
- Compaq Pocket PC with Pocket-Situ CompactFlash card installed
- Compaq serial adapter cable

1. Submersible instruments: Mate the round connector on the communication/power cable to the similarly-shaped connector on the instrument's submersible cable. HERMIT 3000: Connect the comm cable to the HERMIT's RS232 port.
2. Plug the communication/power cable into the Compaq serial adapter cable.
3. Plug the serial adapter cable into the communication port on the Pocket PC.

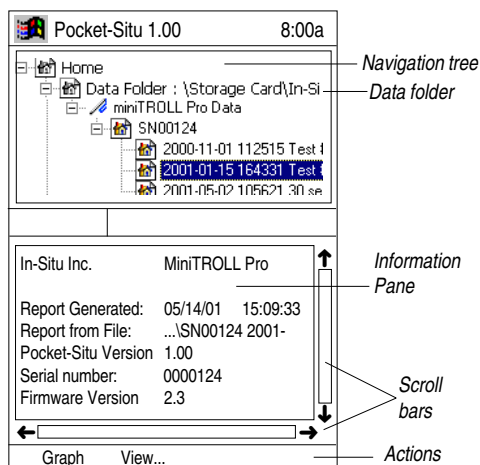


START POCKET-SITU

1. Turn on the Pocket PC.
2. Using the stylus, tap the Windows logo  to display the Start Menu.
3. Tap Pocket-Situ. The Connection Wizard starts. For complete information, see the Win-Situ 2000 Operator's Manual.



TIP: A CF card programmed for the processor in an Aero will not run Pocket-Situ in an iPAQ, and vice-versa. Indications: Pocket-Situ does not appear on the Start Menu, or you get the message "Pocket-Situ is not a valid Windows CE application." In this case, go to our web site at www.in-situ.com, click on the Downloads page, select Pocket-Situ, and follow the instructions to install the version required by your Pocket PC processor.



VIEWING DATA

After extracting one or more tests from your In-Situ instrument to the Pocket PC, a Data Folder will be accessible in Pocket-Situ. The Data Folder has a node for each device type (e.g., miniTROLL Pro Data). Device nodes are further subdivided by device serial number. The serial number node contains the extracted test data.

TO TRANSFER DATA FROM THE POCKET PC TO A DESKTOP PC

After extracting one or more tests from your In-Situ instrument to the Pocket PC, use this procedure to transfer the file(s) to a desktop PC. Exit Pocket-Situ before performing these steps.

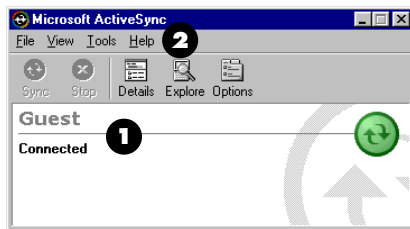


TIP: To transfer files, Microsoft ActiveSync must be installed on the desktop PC, and Pocket-Situ must be properly exited to release the com port.

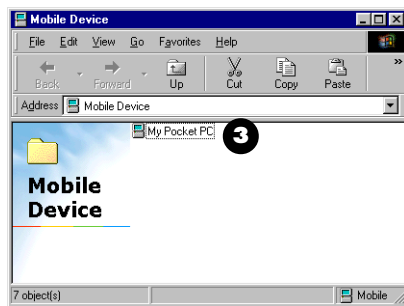


TIP: When extracting a large test from the In-Situ instrument to the Pocket PC on battery power, avoid letting the Pocket PC time out during the transfer. Check this setting as follows: On the Start menu, select Settings, System tab, Power, and clear the checkbox that automatically turns off the device if not used for a specified number of minutes.

1. Turn on the desktop PC and establish communication with the Pocket PC using ActiveSync. The screen may look like the one shown here.
2. Open up Explore from the ActiveSync tool bar.



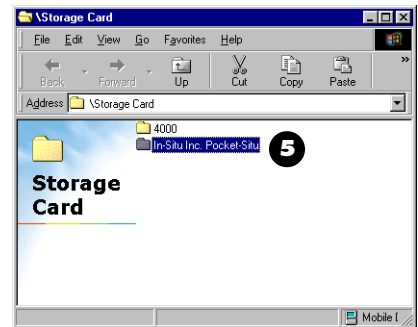
3. Double-click on "My Pocket PC."



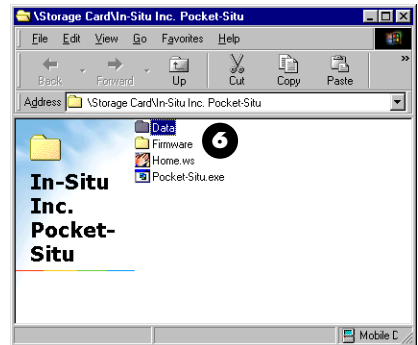
4. Double-click on "Storage Card" to enter the CF card memory.



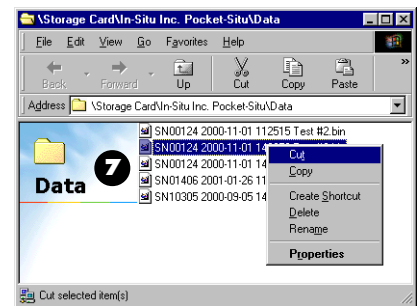
5. Double-click on "In-Situ Inc. Pocket-Situ" to enter the Pocket-Situ directory on the storage card.



6. Double-click on "Data" to enter the Pocket-Situ data folder.



7. Right-click the data file you want to transfer and select Copy or Cut. Note: Selecting Cut will remove the data file from the CompactFlash card.



8. Open Windows Explorer for the desktop PC and navigate to the folder where you want to place the data file. When the cursor is in the desired folder, right-click, and select Paste. If Win-Situ is installed on the desktop PC, we recommend placing the file in the Data folder in the folder where Win-Situ is installed (normally, C:\Win-Situ\Data).

The Pocket PC is covered under limited warranty by Compaq for one year from date of purchase. Hardware warranty questions on the Pocket PC should be directed to Compaq technical support. Pocket-Situ questions should be directed to In-Situ technical support.



TIP: If your Pocket PC responds slowly, stops responding as expected, or "freezes," try resetting it. A reset causes the device to restart and re-adjust memory allocation. Unsaved data in open windows may be lost. Use the stylus to press and hold the Reset button for about two seconds.

NOTE: Exit Pocket-Situ if possible, but do not turn off the Pocket PC as it must remain on in order to reset.